



PROTOTYPE SHOWN

# 2019 *BALE WRAPPERS*





By protecting bales and their nutrient value, your livestock can enjoy high-quality feed throughout the year. This is especially important among large-volume hay operators and custom operators. Vermeer has these customers in mind with the BW5500 inline bale wrapper which provides fast wrapping times, more operational control and airtight wrapping for better nutrient preservation.

The three plastic film pre-stretchers on the BW5500 inline bale wrapper help increase wrapping speed over machines with only two pre-stretchers. The user-friendly precision controller lets you apply a consistent number of wraps on bales with automation that consistently adjusts the wrap settings for environmental variations, helping to minimize the amount of plastic used while wrapping bales tight to reduce the chance of spoilage. Plus, an LCD screen with resettable bale counter makes it convenient to track operational data, eliminating the need to count bales manually.

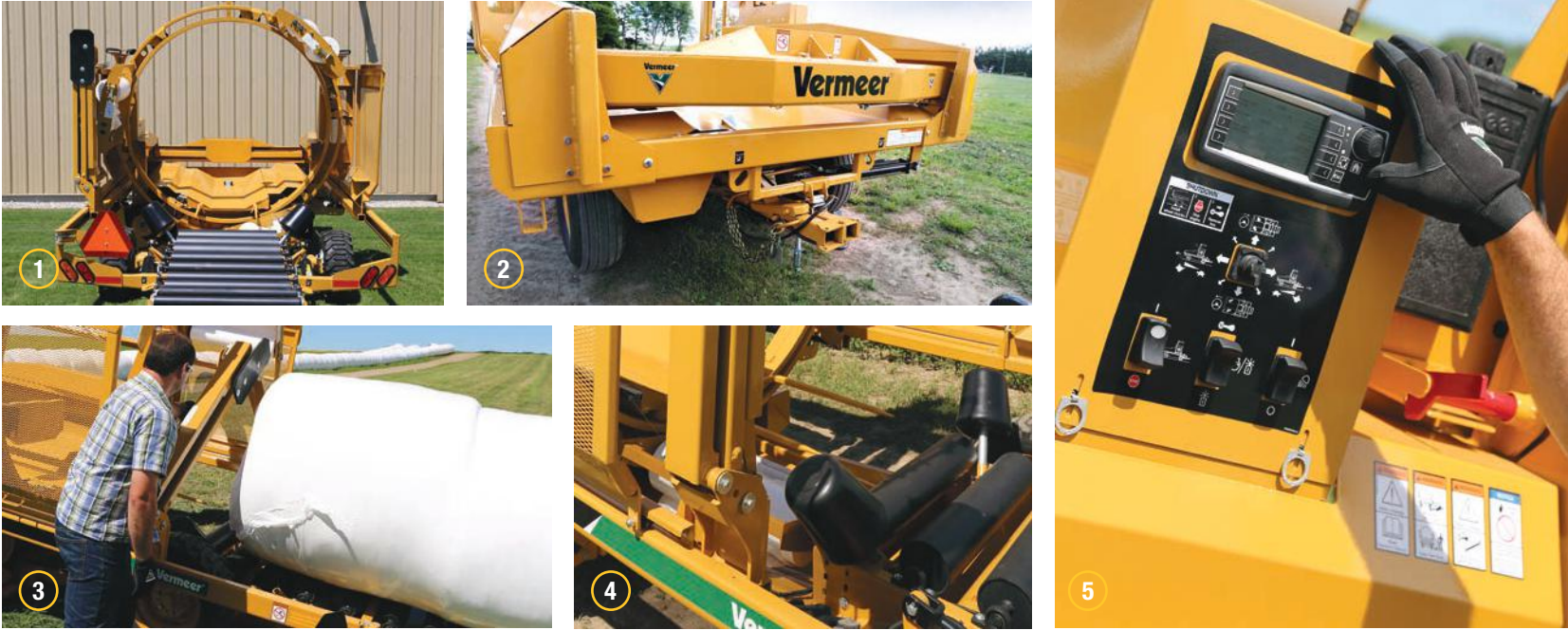
Faster wrapping times. More operational control. And airtight wrapping for better bale protection, even against unfriendly weather. The BW5500 inline bale wrapper is built to handle the high-volume production needs of larger operations and custom operators.

# BW5500 INLINE BALE WRAPPER

Put up more hay in a day by extending the wrapping window into the evening with optional LED night work lights.



PROTOTYPE SHOWN



Prototype shown in above photos.

- 1 Contains three 30 in (76.2 cm) pre-stretchers to wrap faster and increase the time before plastic film refill is needed compared to machines with only two pre-stretchers. The standard hoop can now handle 6 ft (1.8 m) bales, giving the operator the flexibility to wrap cornstalks or large dry hay bales in addition to wet hay.
- 2 The hitch is conveniently located on the loading side of the machine for ease of access to the tongue. This allows you to pull the machine away from the line of bales without requiring a power drive on the bale wrapper.
- 3 Optional spring-assisted final bale push-off. Positioned across the rear side of the wrapper, this optional feature effortlessly pushes the final bale off the wrapper.
- 4 Optional discharge guide rollers help prevent bales from shifting while wrapping on an incline or uneven terrain.
- 5 Digital controller and precision counter. The user-friendly precision controller gives you the ability to set a consistent number of wraps for each bale. The controller adjusts hydraulic flow automatically to apply the right number of wraps, which helps reduce the amount of wasted plastic and optimizes wrap usage in order to reduce the chance of spoilage. A soft-start feature progressively starts the movement of the hoop, which is designed to reduce machine wear and limit the chance of plastic film tearing on startup.



What's driving the baleage trend? Putting up high-moisture hay provides more flexibility to producers by shortening the hay-making window. It enables producers to put hay up at the highest quality and avoid Mother Nature's constant challenges. What's more, wrapping high-moisture hay helps increase palatability and intake of high-quality, high-energy, high-protein forages. This can mean improved feed efficiency and reduced protein additive cost needed, helping to lead to increased weight gains and milk production of your beef and dairy herds.

The new Vermeer SBW-series single bale wrappers allow producers to wrap wet bales in individually wrapped, high-nutrition packages. Ideal for small- to mid-sized operations, the SBW8000 and SBW8500 single bale wrappers are designed to optimize production output and offer operator convenience.

A new in-cab electronic control system features a color touchscreen that provides an automated wrapping process and access to real-time field statistics. The rugged frame and turntable spins the bale so the appropriate amount of wraps are applied evenly on the bale. Pre-stretchers help the plastic film cling to the bale, helping keep air out. These single bale wrappers are designed to facilitate effective production of high-quality baleage.

# SBW8000/SBW8500 SINGLE BALE WRAPPERS



1

1

The in-cab, color touchscreen and keypad control system allow operators to follow an automated or manual wrapping process — and even interrupt mid-wrap if needed. Operators can see field and total bale stats while controlling all functions of the wrapping process.



2



3



4



5



6

- 2 The loading arm on the SBW8000 and SBW8500 single bale wrappers guides and positions the bale gently onto the wrapping table. The SBW8500 single bale wrapper increases operating efficiency by loading and carrying a second bale during the wrapping process. The loading arm can also be folded to a narrow transport width.
- 3 Convenient unloading is the key to optimizing plastic usage and wrapping quality. The bale discharge system pivots up to cradle the bale, while ground support bracing takes the weight of the high-moisture bale off the chassis, helping minimize damage to the package with a lower drop point. (Available only on the SBW8500 single bale wrapper).
- 4 As soon as the wrapping table tips backward, the active bale discharge system is triggered. As the finished bale is being lowered to the ground, a cut-start system neatly slices the film and secures it for the start of the next wrapping cycle.
- 5 The SBW8000 and SBW8500 single bale wrapper have the ability of gently tipping wrapped bales when unloading so they sit on their end, making it convenient for barn stacking. This end tip feature is an option on the SBW8000 single bale wrapper and is standard on the SBW8500 single bale wrapper.
- 6 The ability to store three rolls of plastic film on the machine allows operators to be productive and stay in the field while it is time to wrap. The storage stays clear of the machine operating but provides access when it is time to reload.



Looking for a value-priced, individual silage wrapper without all the extras? The SBW4000 single bale wrapper handles smaller packaged bales and features a low-profile wrapping table. This basic silage wrapper features static operational control for part-time operators looking to do a small to moderate amount of baleage.



**BW5500 INLINE BALE WRAPPER SPECIFICATIONS**

DIMENSIONS	BW5500
Transport length	18 ft (5.5 m)
Transport height	9 ft (2.7 m)
Transport width	8 ft (2.4 m)
Weight	5000 lb (2268 kg)
SPECIFICATIONS	
Engine	13 hp or 20 hp (9.7 kW or 14.9 kW) Honda
Alternator	18 amp
Hydraulic type	Self-contained
Controls	Digital controller with LCD display
Tire size	(2) 11L x 15 (8) ply (2) 27 x 10.5 traction
Hitch	Drawbar
Steering	Electric over hydraulic joystick
Film stretcher	(3) 30 in (76.2 cm) x 55 percent
Bale alignment	Fixed bale guides
Wrapping capacity	120 bales/hr
Hoop speed	Digital controller adjusted
Bale size maximum (diameter x width)	6 ft x 5 ft (1.7 m x 1.5 m) round
Engine start	Electric

**SBW4000 SINGLE BALE WRAPPER**



**SBW8500/SBW8000/SBW4000 SINGLE BALE WRAPPER SPECIFICATIONS**

DIMENSIONS	SBW8500	SBW8000	SBW4000
Transport height	9 ft (2.7 m)	7.4 ft (2.3 m)	7.25 ft (2.2 m)
Transport width	7.4 ft (2.3 m)	8.3 ft (2.5 m)	6.25 ft (1.9 m)
Total length	19 ft (5.8 m)	15.4 ft (4.7 m)	12.1 ft (3.7 m)
Weight	4600 lb (2086.5 kg)	2600 lb (1179.3 kg)	2020 lb (916.3 kg)
Tire size	380/55 x 17	10.0/70 x 15.3	20.5 x 8 x 10
TRACTOR REQUIREMENTS			
Horsepower requirements	55 hp (41 kW)	41 hp (30.6 kW)	25 hp (18.6 kW)
Hydraulic type	1 single acting, return to tank	1 single acting, return to tank	1 double acting
Hydraulic flow rate	6-8 gpm (22.7-30.3 L/min)	6-8 gpm (22.7-30.3 L/min)	4 gpm (15.1 L/min)
Hitch	Drawbar	Drawbar	Drawbar
Electrical	12 VDC	12 VDC	12 VDC optional
SPECIFICATIONS			
Bale size maximum (diameter x width)	5.2 ft x 5 ft (1.6 m x 1.5 m)	5 ft x 4 ft (1.5 m x 1.2 m)	5 ft x 5 ft (1.5 m x 1.5 m)
Bale weight maximum	3300 lb (1496.9 kg)	2200 lb (997.9 kg)	2500 lb (1134 kg)
Film stretcher	55 or 70 percent	55 or 70 percent	55 percent

**OPTIONAL FEATURES**

- ▶ Remote steer, engine start/stop
- ▶ (3) LED night work lights
- ▶ Discharge guide rollers
- ▶ Plastic sensor alert
- ▶ Spring-assisted final bale push-off

**SIGN UP FOR MAKIN' HAY**

and learn more about industry trends, lifestyle topics, videos and products at

**MAKINHAY.COM**



**POST-SEASON MAINTENANCE**

We know that you count on your equipment to perform day in and day out. Let us help you maintain that high performance with our post-season maintenance programs. Check with your local Vermeer dealer for exclusive offers each fall including maintenance checks and performance adjustments so you will be ready to go at the start of the next hay season. Programs are offered on select models and vary annually.

**FINANCING**

Through Vermeer Credit Corporation you and your dealer can determine a payment structure that fits your budget, schedule and needs. For more information on financing options or retail incentives, visit Vermeer.com or contact your local dealer.

**SERVICE**

Expect top service from our independent authorized dealers backed by factory product support service teams. Our mission is to provide you with a level of experience and expertise that goes far beyond product knowledge, sales training and financing programs.

**PARTS**

When it's time to make hay, it's time to make hay. That's why we operate on the premise that parts and service support doesn't help tomorrow when you're in the field today. And we support it with one of the most sophisticated and responsive parts centers in the industry.

Learn more about mowers, rakes, tedders, balers, wrappers and processors on **Vermeer.com**.

Follow along with what's new at Vermeer Ag!





**Vermeer Corporation**  
**1410 Vermeer Road East • Pella, Iowa 50219**  
**800-370-3659 • Vermeer.com**

Vermeer Corporation reserves the right to make changes in engineering, design and specifications; add improvements; or discontinue manufacturing at any time without notice or obligation.

Equipment shown is for illustrative purposes only and may display optional accessories or components specific to their global region. Please contact your local Vermeer dealer for more information on machine specifications.

Specifications, descriptions and illustrative material herein are as accurate as known at time of publication, but are subject to change without notice. Availability of some models and equipment builds varies according to the country in which the equipment is used.

Vermeer and the Vermeer logo are trademarks of Vermeer Manufacturing Company in the U.S. and/or other countries.

© 2018 Vermeer Corporation. All Rights Reserved.

00534 08/18 AG (9K) / PN#510532498



# 2019 ***BALE WRAPPERS***